

## ***Regular Board Meeting***

Tuesday, February 23, 2016

Education Centre

St. Catharines

6:15 - 7:00 p.m. [Private Session]

7:00 - 10:00 p.m. [Public Session]

## **A G E N D A**

### **A. COMMENCEMENT OF THE MEETING OF THE BOARD**

1. Call to Order and Noting of Members Absent
2. Declaration of Conflict of Interest

### **B. COMMITTEE OF THE WHOLE**

1. Motion to Move to Committee of the Whole (Private Session)
2. Motion to Return to Open Board (Public Meeting)

### **C. SINGING OF 'O CANADA'**

E.L. Crossley Orchestra will play 'O Canada', via video

### **D. REFLECTIVE READING**

By Trustee Katelynn Hilborn

**E. BUSINESS OF THE BOARD**

**1. Adoption of the Agenda**

**Recommended Motion:**

“That the Agenda be adopted.”

**2. Approval of Board Minutes**

Pages 6-16

**Recommended Motion:**

“That the Minutes of the Regular Meeting of the District School Board of Niagara dated February 9, 2016 be confirmed as submitted.”

**3. Business Arising from the Minutes**

**4. Ratification of Business Conducted in Committee of the Whole**

**Recommended Motion:**

“That the business transacted in Committee of the Whole be now ratified by the Board.”

**F. EDUCATIONAL SHOWCASING OR PRESENTATIONS**

**1. Director’s Report and Recognition**

W Hoshizaki  
Pages 17-19

Update from Provincial, Regional and Local Perspective

- a) Director’s Recognition – Diana and Matt Woehl, Parent Volunteers  
Stevensville Public School
- b) Director’s Update to Trustees

**2. Educational Showcases**

- a) Stolen Freedom – Jeanne Sauv  P.S.
- b) DSNB Celebrates Pink Shirt Day

M Reimer Friesen  
J Dickson

**G. STUDENT ACHIEVEMENT REPORT**

**H. DELEGATIONS**

**I. BOARD RECESS (Optional)**

**J. OLD BUSINESS**

**1. ACCOUNTS**

S Veld  
Page 20

**Recommended Motion:**

“That the Summary of Accounts paid in Batch Numbers 1689 to 1699, for the month of January 2016, totalling \$17,837,459.28 be received.”

**2. REPORT OF THE SPECIAL EDUCATION ADVISORY COMMITTEE**

J Ajandi/D Robinson  
Pages 21-34

**Recommended Motion:**

“That the report of the Special Education Advisory Committee, dated February 11, 2016 be received.”

**3. REPORT OF THE STUDENT TRUSTEE SENATE**

J Dubé / K Hilborn  
Pages 35-38

**Recommended Motion:**

“That the report of the Student Trustee Senate, dated February 17, 2016 be received.”

**4. REPORT OF THE PROGRAM AND PLANNING COMMITTEE (handout)**

D Schaubel

**Recommended Motion:**

“That the report of the Program and Planning Committee, dated February 23, 2016 be received and the recommendation adopted.”

**K. QUESTIONS ASKED OF AND BY BOARD MEMBERS**

**L. NEW BUSINESS**

**1. Change Board By-Law G-10**

J Ajandi

**Recommended Motion:**

“That Board By-Law G-10 be amended as follows:

G -10 The order of business for regular meetings of the Board shall be:

A. Commencement of the Meeting of the Board

1. **Acknowledgement of Traditional Territory**
2. Call to Order and Noting of Members Absent
3. Declaration of Conflict of Interest”

**M. INFORMATION AND PROPOSALS**

**1. Staff Reports**

a) West Pelham Modified Accommodation Review

Pages 39-54

**Recommended Motion:**

“That the Board approve the recommended option contained in the Final Staff Report for the West Pelham Accommodation Review, attached as Appendix A; specifically,

That E.W. Farr Memorial Public School students be redirected to Pelham Centre Public School for the 2016/2017 school year while construction at the E.W. Farr Memorial site takes place, pending Ministry approval; and

That Pelham Centre Public School be closed for instructional purposes as of June 30, 2017, and that students be redirected to E.W. Farr Memorial Public School site.”

**Recommended Motion:**

“That the Board approve the recommended option contained in the Final Staff Report for the South Central St. Catharines Accommodation Review, attached as Appendix A; specifically,

That Glen Ridge Public School be closed for instructional purposes as of June 30, 2016, and that students be redirected to Oakridge Public School; and

That the boundary for Oakridge Public School be modified as shown in Appendix B and be effective as of June 30, 2016.”

**2. Trustee Information Session**

No information session scheduled.

**3. Correspondence and Communications**

**4. Trustee Communications and School Liaison**

**5. Ontario Public School Boards' Association Report**

J Ajandi

**6. Future Meetings**

The March calendar is attached.

Page 76

**N. ADJOURNMENT**

**Recommended Motion:**

“That this meeting of the District School Board of Niagara be now adjourned.”

**February 23, 2016 Board Meeting  
Director's Update to Trustees**

**Director's Recognition for Extraordinary Contributions – Diana and Matt Woehl, Parent Council Members and Volunteers, Stevensville Public School**

Diana and Matt Woehl are parent council members and volunteers at Stevensville Public School. Their two children, Adam and Natalie, are in grade 7 and 4 respectively. The Woehls have always been actively involved in their children's education - volunteering their time in the classroom as well as supporting all parent council and school initiatives. They exemplify the positive home and school relationship that we strive for at DSBN!

However, it is their commitment and contribution to cleaning up the outdoor classroom for the students of Stevensville PS that is most extraordinary. The couple, along with their two children, spent over 250 hours of their time this past year revitalizing the outdoor classroom. They cleaned out the pond by hand and saved the school over \$2000 in excavation fees. It was an extremely dirty and difficult job. The sludge had built up over the past 10 years and was extremely heavy as well as mosquito infested. They did this back breaking work with a smile and called it their "date night!" Not only did they complete this difficult work but they cleared an extensive amount of brush, removed a rotten deck, installed a pump and filter, installed an alarm system, rebuilt old gardens, installed a drainage system and helped the grade 8 students spread over 10 yards of stone and 10 yards of mulch! As a result of their contributions, other community members are inspired to become involved in this project.

Stevensville PS's outdoor classroom is once again a source of pride for their community! Teachers are using the space to enhance student skills in literacy, numeracy, science, the arts, character education and leadership. The Woehl family is proof that one family can make a difference!

Thank you Diana and Matt for creating this beautiful space for the children to learn and grow! You are most deserving of the Director's Recognition for Extraordinary Contributions!

## Local

### **Turning High Poverty Schools into High Performing Schools Conference**

On Wednesday, February 17th, the DSBN welcomed authors William Parrett and Kathleen Budge to present their work focused on "Turning High Poverty Schools into High Performing Schools." The audience consisted of 209 DSBN staff and 183 staff from boards across the province of Ontario.

The dynamic presenters shared their findings gleaned from years of research in schools where poverty was seen as a barrier to academic achievement, and shared effective strategies that schools can use to improve school culture, student/family supports and academic achievement for this vulnerable population. Participants were delighted to have the opportunity to hear from internationally renowned experts, confront the issues facing their students as a school team, and build plans to transform the learning environment.



### **AN Myer Robotics**

In the very first semester of a new robotics focused computer engineering technology grade 11 course, the AN Myer team was crowned Tournament Champions at a VEX Robotics qualifying tournament.

As a result of this win the team not only qualified for the Ontario Provincial championships but also qualified for the C.R.E.A.T.E US National Championships in Iowa in April. Two hundred teams from the USA, Canada and China will be competing in Iowa. As of today, AN Myer is the only DSBN school qualified for this event and one of only three teams registered from Canada. The other two teams are from Calgary.

This is a major accomplishment considering the infancy of the program and our students are extremely excited about this opportunity. The students have even set up a GoFundMe site to fundraise for this trip.

### **Lego Robotics Challenge**

DSBN's annual Lego Robotics Challenge recently took place at Brock University with over 80 elementary teams in attendance. The theme this year was "Cross Canada," students were given four separate tasks their robot had to perform autonomously ranging from feeding livestock in the Prairies, gathering diamonds up north, rescuing lobster from the sea in Newfoundland and tapping maple trees for syrup in Quebec.

Schools were represented from both the junior and intermediate divisions with many schools holding pre-event tryouts to determine who would attend the one day challenge. Points were awarded for each challenge to determine the overall winner for each division.

The event was attended by over 500 people including elementary principals, teachers, students and parents. 16 of our SHSM students from A.N. Myer and E.L. Crossley were also in attendance to act as scoring judges.

Congratulations to Kevin Graham and the tech team on organizing and running a terrific event and for providing such an amazing opportunity for students!

### **Active and Safe Routes to School Summit**

The Heart and Stoke Foundation together with Green Communities Canada are hosting summits in four Ontario regions to share research and best practices and provide support to local communities wanting to integrate the Active and Safe Routes to School and School Travel Plan models into school district transportation policies.

#### **Objectives:**

- 1) To encourage discussion among a diverse group that focuses on promoting safe, physically active and environmentally sustainable transportation to and from schools
- 2) To identify action items
- 3) To allow partners to network, share experiences and expertise and have fun

The Niagara summit was recently held at DSBN's Education Centre. Congratulations to the following schools who received the Golden Shoe Awards:

- **Lakeview Public School, Grimsby**
- **Nelles Public School, Grimsby**
- **Glynn A. Green Public School, Pelham**
- **College Street Public School, West Lincoln**

Thank you to the award winning schools for their leadership in creating a positive environment for active travel!

### **Kindergarten Math Strategies**

Power Glen Public School kindergarten teachers have created interesting 'math talk videos' and are sharing them with parents. The videos are great examples of how the kindergarten students are using different strategies to solve math questions.



# SUMMARY OF ACCOUNTS

---

---

## **Background and Rationale:**

The Summary of Accounts is regularly presented to the Trustees in order to disclose the Board expenditures paid during the previous month. The Summary highlights the costs associated with employee benefits, transportation, utilities, and the total of all other non-salary expenditures.

## **Summary of Accounts:**

A summary of accounts paid in Batch Numbers 1689 to 1699, for the month of January 2016, is as follows.

Employee Benefits	\$ 8,485,361.66
Transportation	1,438,752.76
Utilities	742,700.80
Other	<u>7,170,644.06</u>
Total	<b><u>\$ 17,837,459.28</u></b>

## **Recommended Motion:**

**“That the Summary of Accounts paid in Batch Numbers 1689 to 1699, for the month of January 2016, totaling \$17,837,459.28 be received.”**

## **Supporting Data:**

A computer listing of all cheques and electronic fund transfers, issued by the Board for the month of January 2016, will be in the Director’s office during the Board meeting.

Respectfully submitted,

Stacy Veld  
Superintendent of Business Services

Board Meeting of February 23, 2016

***For further information, please contact Stacy Veld or the Director of Education.***

**WEST PELHAM MODIFIED ACCOMMODATION REVIEW  
ADDENDUM TO FINAL STAFF REPORT**

**PURPOSE**

On January 12, 2016, Trustees received the Final Staff Report for the West Pelham Accommodation Review (Appendix A). Community consultation continued since that time and concluded after the public delegations at the January 26, 2016 Board meeting. This Addendum Report provides Trustees with a final summary of the community consultation process and presents a final recommendation for Trustees' decision.

**COMMUNITY CONSULTATION**

Consultation with school communities, municipal and community partners, and the general public was ongoing throughout the Accommodation Review process. The Final Staff Report detailed the community consultation process and provided a summary and review of the comments received as of the date of the Report. Since that time, one additional comment has been received from the Niagara Region. No delegations were made at the January 26, 2016 Board Meeting. Comments from municipal partners, community partners and the public are posted on the Accommodation Review website [www.dsbn.org/arc](http://www.dsbn.org/arc).

**Municipal Partners**

DSBN staff had meetings with both Town and Regional representatives regarding the Accommodation Review, the process, the recommended option, and related municipal matters. The Town and Region were encouraged to submit their input and comments during this process.

The Niagara Region submitted a letter to the DSBN dated January 26, 2016. The Region acknowledges the realities faced by the DSBN of declining enrolment and increasing operating costs, and does not support a modified accommodation review process that shortens timelines. The Region remains willing to work with the DSBN collaboratively to explore options for former school properties and plan for future uses. DSBN Trustees and staff met with Niagara Region Councillors and staff on February 3, 2016, to continue the dialogue around community hubs and collaborative planning. The DSBN will continue to work with municipal partners on future use options for former school properties.

**FINAL STAFF REPORT RECOMMENDED OPTION**

The recommended option presented in the Final Staff Report was to close Pelham Centre Public School for instructional purposes as of June 30, 2017, and redirect students to the E.W. Farr Memorial Public School site. Having completed the public consultation process and considered the feedback received, DSBN staff recommends Trustees approve the recommended option.

**RECOMMENDATION**

***That the Board approve the recommended option contained in the Final Staff Report for the West Pelham Accommodation Review, attached as Appendix A; specifically,***

***That E.W. Farr Memorial Public School students be redirected to Pelham Centre Public School for the 2016/2017 school year while construction at the E.W. Farr Memorial site takes place, pending Ministry approval and;***

***That Pelham Centre Public School be closed for instructional purposes as of June 30, 2017, and that students be redirected to E.W. Farr Memorial Public School site.***

Appended Data:

APPENDIX A: Final Staff Report for the West Pelham Accommodation Review

Respectfully submitted on February 19, 2016,

Lora Courtois  
Superintendent of Planning

Warren Hoshizaki  
Director of Education

# APPENDIX A



# **District School Board of Niagara**

**2015-2016**

**West Pelham**

**Modified Accommodation Review**

**Final Staff Report**



**DISTRICT SCHOOL BOARD OF NIAGARA  
REPORT TO THE BOARD OF TRUSTEES  
MEETING OF JANUARY 12, 2016**

**WEST PELHAM MODIFIED ACCOMMODATION REVIEW  
FINAL STAFF REPORT**

**PURPOSE**

On October 13, 2015, after receiving and carefully considering the West Pelham Initial Staff Report and School Information Profile Reports, the Board of Trustees approved the initiation of the West Pelham Modified Accommodation Review involving E.W. Farr Memorial PS and Pelham Centre PS.

The purpose of this Final Staff Report is to provide Trustees with a summary of the West Pelham Modified Accommodation Review, information on the community consultation process, and a final staff recommended option. The Accommodation Review process is still underway, with opportunities for public delegations at the January 26, 2016 Board meeting. Any changes to the Final Staff Report, as a result of public delegations, will be detailed in an addendum. The Final Staff Report, including a public delegation addendum, will be presented on February 23, 2016 for Trustees' consideration.

**WEST PELHAM MODIFIED ACCOMMODATION REVIEW**

The District School Board of Niagara's (DSBN) Long Term Accommodation Plan (LTAP), 2015-2024, details the current and future state of the Board's elementary and secondary schools. The LTAP helps identify planning areas and schools that face challenges due to enrolment or facility utilization and where opportunities exist to create structures that support kindergarten to grade 8 (K – 8) or single track French Immersion programs.

E.W. Farr Memorial PS and Pelham Centre PS were identified as schools where an opportunity exists to create a K – 8 structure. Currently, the two elementary schools function together to provide a K – 8 education with students attending E.W. Farr Memorial PS for K – 3 and then advance to Pelham Centre PS for grade 4 – 8. Pelham Centre PS is projected to experience lower utilization rates in the upcoming years. Therefore, consolidation of the schools into a single K – 8 school would address future facility utilization issues.

The West Pelham Modified Accommodation Review is being undertaken in accordance with DSBN Accommodation Review Policy F-2. A modified process does not require the establishment of an Accommodation Review Committee. The West Pelham Accommodation Review meets the following criteria set out in Policy F-2 for a modified process:

CRITERIA	ACTUAL
Distance to nearest available accommodation is 10 kilometres or less from the school(s) under review.	The distance between E.W. Farr Memorial PS and Pelham Centre PS is 2.8 kilometres.
The relocation of a program or grades where the enrolment constitutes 50% or more of the school's enrolment.	The consolidation of Pelham Centre PS into E.W. Farr Memorial PS would represent the relocation of 100% of student enrolment in all grades.

The notice of Trustees' decision to initiate the West Pelham Modified Accommodation Review was posted on the DSBN Accommodation Review website, [www.dsbn.org/arc](http://www.dsbn.org/arc), and published in the local newspapers. It was also distributed to the affected school Principals and communities, Town of Pelham, Niagara Region, community partners, Directors of Education of coterminous boards, and the Ministry of Education. The Notice of Initiation provided information on the public meeting, how to participate in the process, and how to obtain more information.

## **COMMUNITY CONSULTATION**

Consultation with school communities, municipal and community partners, and the general public is key to the Accommodation Review process. Preliminary consultation with municipalities and community partners was done prior to the initiation of the Accommodation Review and was ongoing throughout the process. Immediately following the Trustees' decision to initiate the Accommodation Review, a webpage was available on the Board and school websites for public input.

A public meeting was held on November 26, 2015, at E.W. Farr Memorial PS to provide interested parties with an opportunity to learn about the Accommodation Review and to provide their input by way of speaking or submitting written comments. The public was reminded to utilize the DSBN and school Accommodation Review websites to access relevant information. The website contains the process, important dates, reports and other related documents, as well as the opportunity to submit further comments, input, and questions.

Principals of E.W. Farr Memorial PS and Pelham Centre PS kept their school community informed through newsletters, school council meetings, and by encouraging parents to contact them with any questions or concerns regarding the Accommodation Review.

A summary of the consultation process follows:

### ***Town of Pelham***

DSBN staff met with Town of Pelham representatives from the Community Planning & Development Department on two occasions prior to the initiation of the Accommodation Review. The meetings included a discussion of the DSBN's Long Term Accommodation Plan, the Ministry's Pupil Accommodation Review Guidelines, potential accommodation reviews, growth patterns in Pelham, and community partnership opportunities. The Town provided the DSBN with updated community growth information and expressed an interest in future community partnership discussions should any occur as a result of an accommodation review.

After the initiation of the Accommodation Review, the DSBN staff met with the Town of Pelham and the Library Board to present and discuss the recommended option in the Initial Staff Report. The meeting included a discussion regarding the recommended option, the Accommodation Review process, and future opportunities for partnerships, in particular the possibility of a community partnership with a shared library and park at the E.W. Farr Memorial PS site. Additionally, the Town of Pelham was invited to submit written comments.

As of the date of this report, no written comments have been received from the Town of Pelham<sup>1</sup>. The DSBN has received verbal confirmation from the Town that the shared library will not be explored at this time.

---

<sup>1</sup> Report prepared: January 4, 2016

## ***Niagara Region***

DSBN staff met with Niagara Region staff prior to the initiation of the Accommodation Review. The meeting included a discussion of the DSBN's Long Term Accommodation Plan, the Ministry's Pupil Accommodation Review Guidelines, potential accommodation reviews, growth patterns in Niagara, and community hub possibilities. The Niagara Region provided the DSBN with updated Regional policy information.

After the initiation of the Accommodation Review, DSBN staff had a teleconference with Niagara Region staff to discuss the recommended option in the Initial Staff Report and the Accommodation Review process. The meeting included the rationale behind E.W. Farr Memorial PS being recommended as the preferred site for consolidation. The Niagara Region expressed an interest in future opportunities for partnerships, in particular, the exploration of Regional services that may support the community hub concept. The Niagara Region had an interest in the process for disposal of surplus school properties and how it could fit into their planning process. In addition, the Niagara Region was invited to submit written comments.

As of the date of this report, no written comments have been received from the Niagara Region<sup>2</sup>.

## ***Community Partners/Community Use of School Permit Holders***

Before and after school child care is offered by A Child's World at E.W. Farr Memorial PS and is the only community partner in this review. There were no community use permits issued for the last year at either E.W. Farr Memorial PS or Pelham Centre PS. The community partner was invited to provide input prior to, and after the initiation of the Accommodation Review.

As of the date of this report, no written comments have been received<sup>3</sup>. DSBN staff have received verbal confirmation from A Child's World that they will provide before and after school child care at E.W. Farr Memorial PS should the consolidation be approved. In addition, during the transition period, A Child's World will provide before and after school child care at Pelham Centre PS.

In accordance with the Schools-First Child Care Capital Retrofit Policy, DSBN staff will continue discussions with the Niagara Region and local child care providers to ensure there is an opportunity for full-day child care, should the need arise in the future.

## ***Public Meeting/Website Submissions***

The public meeting had over 20 attendees. A total of 15 comments were received through the public meeting event or the webpage. On December 9, 2015, answers to key questions or comments received were posted on the Board's Accommodation Review webpage.

A few of the comments received directly related to the recommended accommodation option. Some community members supported the recommended K – 8 structure while a couple advised their preference is for the existing, two school, K – 3 and 4 – 8 structure. Reasons for supporting the recommended option included keeping children together in one school, that E.W. Farr Memorial PS is a preferred site within the community, and the school enhancements. Keeping similar aged children together in a smaller atmosphere was cited as a reason for preferring a K – 3 structure.

---

<sup>2</sup> Report prepared: January 4, 2016

<sup>3</sup> Report prepared: January 4, 2016



The majority of remaining comments received from the community acknowledged the proposed consolidation option and were related to matters that would occur after a decision is made to consolidate or close schools. For example, community members had an interest in:

- Ensuring the child care is maintained before and after school, during the transition and at the newly consolidated school,
- Transition activities and the expected construction timelines,
- The design of an expanded E.W. Farr Memorial PS building and site,
- The naming of the newly consolidated school.

The DSBN's Accommodation Review Policy sets out that a Transition Team is to be established to facilitate a school closure. The Transition Team would include the Area Superintendent, Principals, parents and staff representatives of E.W. Farr Memorial PS and Pelham Centre PS. The Team would identify the issues, needs, and responsibilities related to the school closure. They would also monitor the progress of transition activities and well-being of students affected by the school closure. As a result, communication of this information to stakeholders, would be shared on a regular basis.

A Child's World will provide before and after school child care services during the transition phase and at the newly consolidated school.

A key priority of the DSBN, is to provide the best physical school environment for students to learn and grow. Matters related to building and site design, such as ensuring the adequacy of septic and cistern services, the design of the playground and parking lot, and accessibility requirements, will be addressed through the site plan phase.

#### **ACCOMMODATION ACTIONS TAKEN AND CONSIDERED**

The DSBN has other options that do not include an Accommodation Review to address accommodation issues at schools. For instance, enrolment or facility utilization issues may be addressed through boundary adjustments, community partnerships, program changes, grade relocation, or facility improvements.

In the case of E.W. Farr Memorial PS and Pelham Centre PS the following actions have been taken:

- 2012/2013: A Child's World opened a full-day child care centre at E.W. Farr Memorial PS.
- 2014/2015: Full-day kindergarten is expanded to E.W. Farr Memorial PS. A Child's World converts to before and after school child care.

The West Pelham Accommodation Review has been undertaken to take advantage of the educational benefits of a K – 8 school structure and to also address future facility utilization issues at Pelham Centre PS. Throughout the Accommodation Review, other scenarios were considered including the expansion of both schools to a K – 8 structure, boundary changes, and alternative consolidation options.

Current and projected enrolment would not be sufficient to support two K – 8 schools within the boundary area.

Altering the boundaries of the neighbouring schools to increase enrolment at either E.W. Farr Memorial PS or Pelham Centre PS would not be a feasible solution. The geographical area serving these schools is very large, covering the entire Town of Pelham, west of Effingham Road and there are no neighbouring schools within close proximity (Appendix A).

DSBN staff considered consolidating E.W. Farr Memorial PS students into Pelham Centre PS and determined this scenario was not preferred. E.W. Farr Memorial PS is located in the Fenwick urban area and Pelham Centre PS is located approximately 2.8 kilometres to the east, in a rural setting. E.W. Farr Memorial PS is centrally located in the catchment area, as shown in Appendix C, with the majority of families residing closer to E.W. Farr Memorial PS than Pelham Centre PS.

Community land use planning policies encourage the redevelopment and expansion of existing schools within the urban area boundary where municipal water and sewer services are available. E.W. Farr Memorial PS is located within the Fenwick urban area boundary and supports this planning direction, while Pelham Centre PS is located outside the urban area boundary.

## **RECOMMENDED OPTION**

*The recommended accommodation option is to close Pelham Centre Public School for instructional purposes as of June 30, 2017, and redirect students to the E.W. Farr Memorial Public School site.*

### **Rationale**

The DSBN believes it is in the best interest of students to maintain school populations that support a diverse learning environment and provide a range of opportunities in programming, extracurricular activities, and services. At the same time, the Board must address the impacts and costs of declining enrolment, excess space at schools, and aging facilities. Consolidating the students into one school is the best option for both school communities and allows the Board to maximize resources.

In arriving at its recommendation, DSBN staff has determined that the two school populations can be accommodated, with renovations at the E.W. Farr Memorial PS site. This option would benefit students with enhanced programming and academic continuity. It would also address facility utilization and aging facilities. From a financial perspective, reducing the operating costs allows funds to be redirected into additional staff and resources.

### *Programming*

The consolidation of Pelham Centre PS into the E.W. Farr Memorial PS site brings together communities, teachers, and resources into a single school, which will provide the benefits of a larger school population. Schools with a larger population have multiple classes of the same grade providing both teachers and students with the opportunity for diverse learning environments. For students, this allows access to a variety of teachers and programs as well as flexibility in placements to support their learning needs. For teachers, it allows for professional collaboration when working together to enhance their teaching practice.

A larger school population would provide for additional staff including a full time Principal, a dedicated Learning Resource Teacher and a Teacher-Librarian. In addition, students are provided with more opportunities outside the context of the regular class structure through extracurricular sports, clubs, and after school programs. Shared resources also serve to enhance student learning.

### *K – 8 Elementary School Organization*

The DSBN supports the K – 8 structure and has been successfully consolidating school communities to provide a K – 8 elementary education for students in one school. Recent examples include: the consolidation of the former Meadowvale PS (JK – 6) and Sheridan Park PS (K – 8) into the new William Hamilton Merritt PS, the former Queen Mary PS (7 – 8), Maywood PS (K – 6), Memorial PS (K – 6), and Alexandra PS (K – 6) into the new Harriet Tubman PS, and the bringing together of Ridgeway PS (K – 3)

and Bertie PS (4 – 8) along with Crystal Beach PS (K – 8) into the new John Brant PS which is scheduled to open in September 2016. All of these successful consolidations to the K – 8 structure minimized disruption to students by eliminating the transition from one school to another and kept siblings together in one school.

### *Enrolment & Facility Utilization*

The consolidation would result in an on-the-ground (OTG) capacity of 328 and a projected enrolment of 281 students at E.W. Farr Memorial PS site. The facility utilization rate would be 86%. Projections indicate a peak consolidated enrolment of 329 students within the next 10 years. The consolidation would reduce surplus pupil spaces by 30.

A map of the new boundary, which will not change from the previous boundary as a result of a consolidation, can be found in Appendix A. The consolidated enrolment projections can be found in Appendix B.

### *Transportation*

Currently, bus routes serve both school sites. Consolidating the school population into the E.W. Farr Memorial PS site would mean that the bus routes would only need to serve one school site. Student ride time would be reduced and the number of students that walk to school would increase from 29 to 55. The average ride time under the consolidated scenario will be 20 minutes.

The opportunity for siblings to travel to and from school together, and for older students to support younger students to and from bus stops and on the bus, is maximized. In addition to improved route efficiency and service, consolidating both schools into one school reduces the number of students eligible for transportation and would save the requirement for one bus, resulting in a cost savings of \$24,000 annually.

### *Facilities & Funding*

The consolidation scenario would require classroom additions and renovations to E.W. Farr Memorial PS, including a new gymnasium, Learning Commons, parking and bus drop off. Capital investment of approximately \$5.5 to \$6.5 million will be required to facilitate the consolidation scenario. A funding request under the School Consolidation Capital (SCC) program would be submitted to the Ministry of Education to support the construction. The remainder of the project would be eligible under the requirements for school renewal funding. Should the business case for Ministry SCC funding not be successful at this time, other funding options would be pursued.

The total estimated net savings to the Board in staffing, utility, property and maintenance costs including transportation is approximately \$170,000 annually. Based on the Multi-Year Facility Renewal Needs Assessment Summary, the total estimated 5 year facility renewal costs avoided due to school closure is approximately \$3.6 million.

A financial summary of the consolidation scenario is provided in Appendix D.

## PROPOSED ACCOMMODATION PLAN

The consolidation of the two schools into the E.W. Farr Memorial PS site, should this option be approved, could be completed as follows:

**April 2016:** Ministry of Education funding announcement is expected. It should be noted that the remainder of the Accommodation Plan has been developed presuming a successful Ministry funding request.

**April 2016 – September 2017:** A Transition Team consisting of the Area Superintendent, Principals, parents and staff representatives of E.W. Farr Memorial PS and Pelham Centre PS will be established to identify issues, needs, and responsibilities related to the implementation of the school closure.

**July 2016:** Construction expected to begin at the E.W. Farr Memorial PS site.

**September 2016:** Students from E.W. Farr Memorial PS would join Pelham Centre PS students at the Pelham Centre PS site while construction is taking place. The increased student population could be accommodated with portables.

**September 2017:** All students would be relocated from Pelham Centre PS to the newly renovated, K – 8 school site.

## TIMELINES

Public delegations will be received for the January 26, 2016, Board Meeting. Following the delegations, a summary of the public delegations will be prepared as an addendum to the Final Staff Report. The Final Staff Report and addendum will be brought forward to Trustees for consideration at the February 23, 2016 Board Meeting.

## RECOMMENDATION

***That the Board receives the West Pelham Modified Accommodation Review Final Staff Report.***

Appended Data:

- APPENDIX A: Consolidated Scenario Boundary Map
- APPENDIX B: Consolidated Scenario Enrolment Projections
- APPENDIX C: Current Student Distribution Map
- APPENDIX D: Consolidated Scenario Financial Summary

Respectfully submitted on January 8, 2016,

Lora Courtois  
Superintendent of Planning

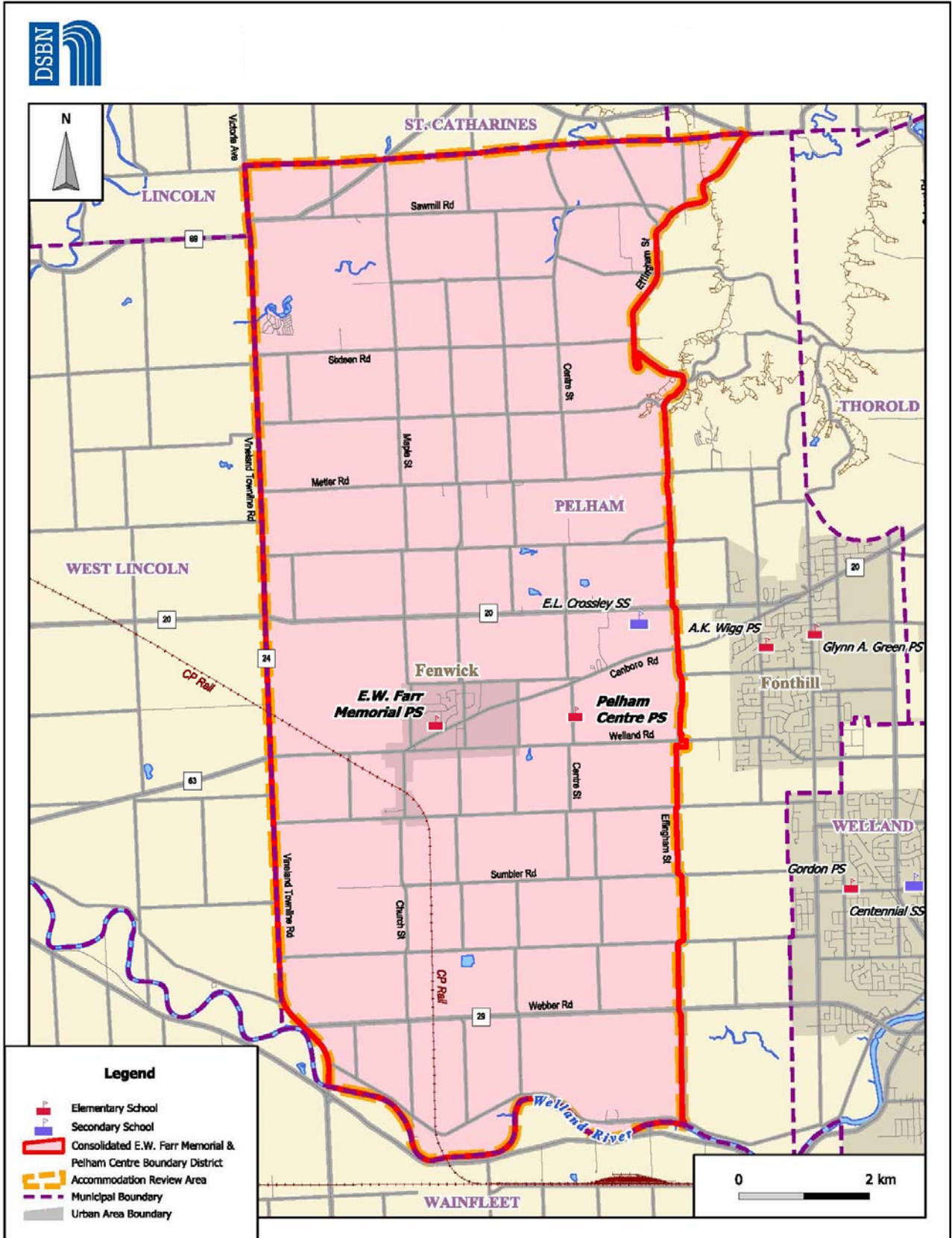
Warren Hoshizaki  
Director of Education

**Final Staff Report  
West Pelham Accommodation Review**

**APPENDICES INDEX**

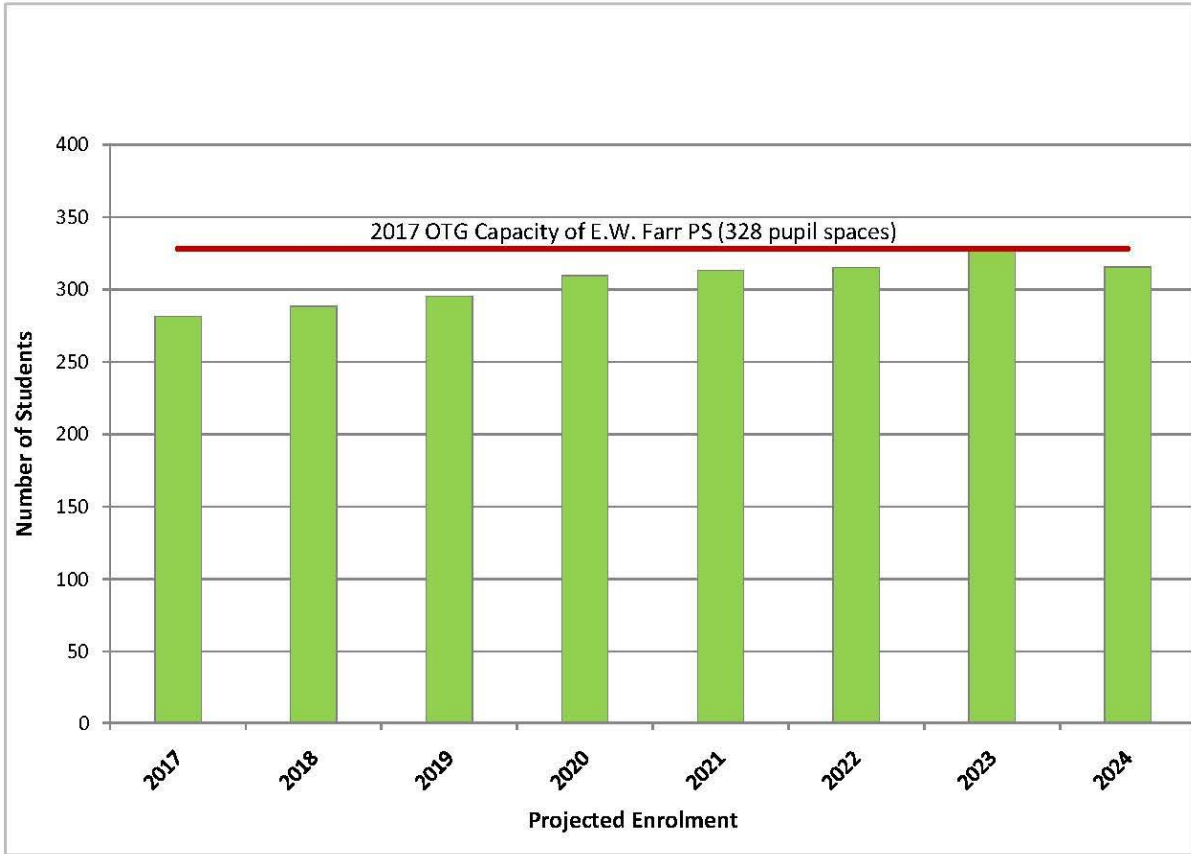
<b>Title</b>	<b>Appendix</b>
Consolidated Scenario Boundary Map	Appendix A
Consolidated Scenario Enrolment Projections	Appendix B
Current Student Distribution Map	Appendix C
Consolidated Scenario Financial Summary	Appendix D

Consolidated Scenario  
Boundary Map



Map prepared by: DSBN Planning Services.  
Contains map data courtesy of: © 2014 Regional Municipality of Niagara and its suppliers, © 2010 Queen's Printer (Ontario Ministry of Natural Resources)

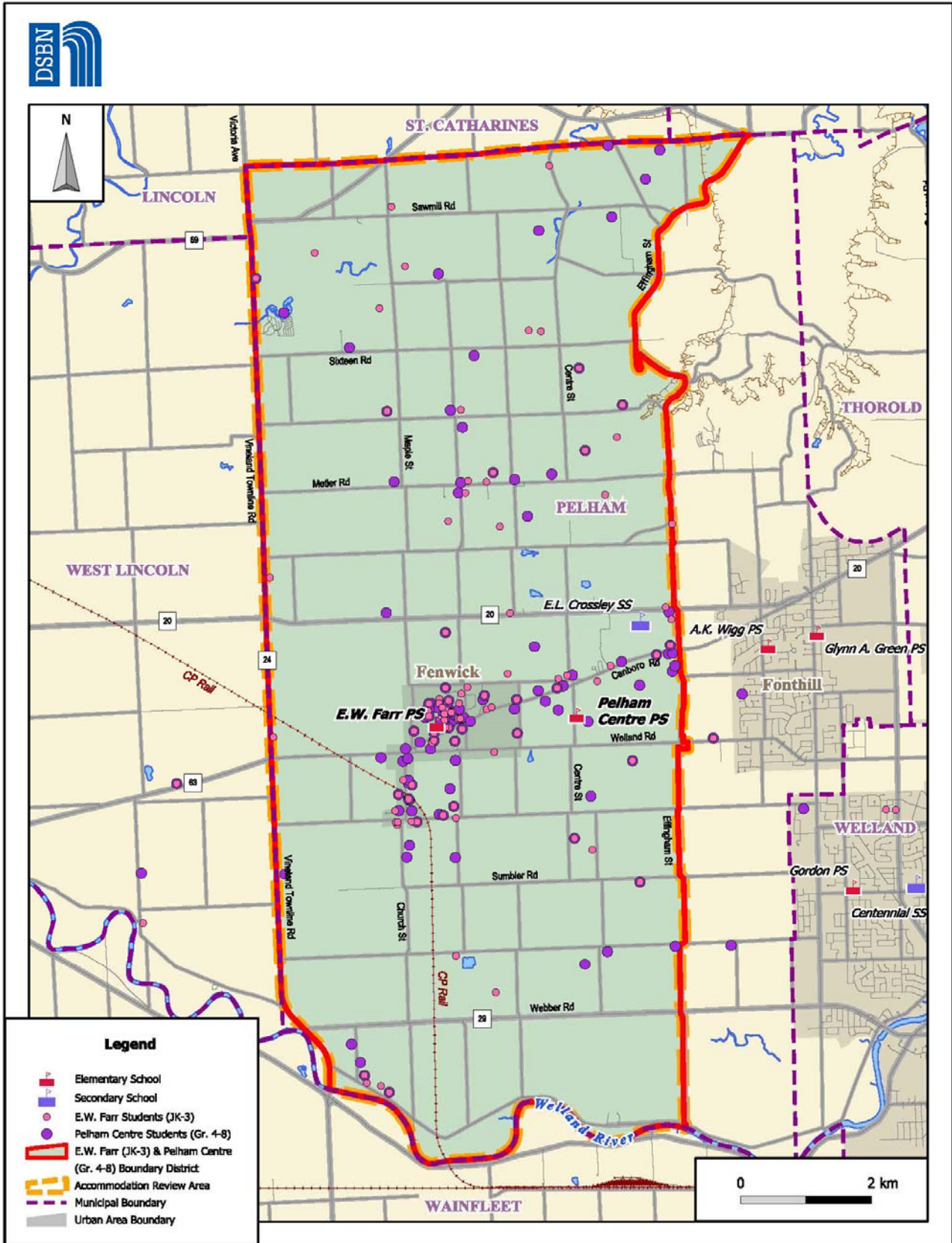
**Consolidation Scenario  
Enrolment Projections**



Year	JK	SK	1	2	3	4	5	6	7	8	Total
<b>2017</b>	28	29	27	40	19	30	29	21	29	29	<b>281</b>
<b>2018</b>	26	29	29	29	42	20	31	31	22	30	<b>289</b>
<b>2019</b>	26	27	29	31	31	44	20	33	33	22	<b>295</b>
<b>2020</b>	26	27	27	31	33	32	44	22	35	34	<b>310</b>
<b>2021</b>	26	27	27	29	33	34	32	48	23	35	<b>313</b>
<b>2022</b>	26	27	27	29	31	34	35	34	50	23	<b>315</b>
<b>2023</b>	26	27	27	29	31	32	35	37	36	51	<b>329</b>
<b>2024</b>	26	27	27	29	31	32	32	37	39	37	<b>316</b>

St. 195

Current Student  
Distribution Map



Note: Student locations based on October 30, 2014 Trillium Data.  
Map prepared by: DSBN Planning Services. Contains map data courtesy of: © 2014 Regional Municipality of Niagara and its suppliers, © 2010 Queen's Printer (Ontario Ministry of Natural Resources)



Consolidated Scenario  
Financial Summary

ESTIMATED CAPITAL COST OF CONSTRUCTION	Capital (One Time) \$
Capital addition and site requirements:	
• Additional classrooms, new gym and learning commons, parking and access	<u>5,500,000 - 6,500,000</u>

ESTIMATED ANNUAL OPERATING SAVINGS	Annual \$
<u>Savings</u>	
Transportation	24,000
Principals / Teaching Assignments	66,000
Secretaries	48,000
Caretaking	78,000
Utility, Property and Maintenance	<u>96,000</u>
	312,000
<u>Costs</u>	
Loss of School Foundation Funding	<u>142,000</u>
Net Annual Operating Savings	<u><u>170,000</u></u>

ESTIMATED SCHOOL RENEWAL	Capital (One Time) \$
5 Year School Renewal Expenditures Avoided	<u>3,637,748</u>

**DISTRICT SCHOOL BOARD OF NIAGARA  
REPORT TO THE BOARD OF TRUSTEES  
MEETING OF FEBRUARY 23, 2016**

---

**SOUTH CENTRAL ST. CATHARINES MODIFIED ACCOMMODATION REVIEW  
ADDENDUM TO FINAL STAFF REPORT**

**PURPOSE**

On January 12, 2016, Trustees received the Final Staff Report for the South Central St. Catharines Accommodation Review (Appendix A). Community consultation continued since that time and concluded after the public delegations at the January 26, 2016 Board meeting. This Addendum Report provides Trustees with a final summary of the community consultation process and presents a final recommendation for Trustees' decision.

**COMMUNITY CONSULTATION**

Consultation with school communities, municipal and community partners, and the general public was ongoing throughout the Accommodation Review process. The Final Staff Report detailed the community consultation process and provided a summary and review of the comments received as of the date of the Report. Since that time, a total of four additional comments have been received from the public, the City of St. Catharines, and the Niagara Region. One delegation was made at the January 26, 2016 Board Meeting. Comments from municipal partners, community partners and the public are posted on the Accommodation Review website [www.dsbni.org/arc](http://www.dsbni.org/arc).

**Municipal Partners**

DSBN staff had meetings with both City and Regional representatives regarding the Accommodation Review, the process, the recommended option, and related municipal matters. The City and Region were encouraged to submit their input and comments during this process.

The Niagara Region submitted a letter to the DSBN dated January 26, 2016. The Region acknowledges the realities faced by the DSBN of declining enrolment and increasing operating costs, and does not support a modified accommodation review process that shortens timelines. The Region remains willing to work with the DSBN collaboratively to explore options for former school properties and plan for future uses. DSBN Trustees and staff met with Niagara Region Councillors and staff on February 3, 2016, to continue the dialogue around community hubs and collaborative planning. The DSBN will continue to work with municipal partners on future use options for former school properties.

The City of St. Catharines Council and Committee Coordinator forwarded a motion passed by Council that does not support the potential closing of Glen Ridge PS and that directs City staff to work with Councillors, Trustees, and DSBN staff to find an appropriate alternative. The City's Council Meeting minutes indicate that six Councillors out of twelve voted on the motion, with 5 in support and 1 against. The remaining Councillors either had a conflict of interest or were absent.

**Public Comments**

Since the January 8, 2016, Final Staff Report, an additional two public submissions were made through the website. In one submission, a parent indicated their preference for the small school atmosphere at Glen Ridge PS, and is concerned the extra support their child needs won't be available in a larger school setting. The other submission acknowledges both schools require investment and suggests that Oakridge PS should remain open.

Mr. John Netherway made a presentation at the January 26, 2016 Board Meeting on behalf of the Old Glenridge Community Association (OGCA). The OGCA information presented requested Trustees defer their decision regarding the recommendation for Glen Ridge PS to provide the community with an opportunity to be further engaged in the action planning for the revival of the neighbourhood school.

#### **FINAL STAFF REPORT RECOMMENDED OPTION**

The recommended option presented in the Final Staff Report was to close Glen Ridge Public School for instructional purposes as of June 30, 2016, and redirect students to Oakridge Public School. The school catchment area boundaries would be modified accordingly (Appendix B). Having completed the public consultation process and considered the feedback received, DSBN staff recommends Trustees approve the recommended option.

#### **RECOMMENDATION**

***That the Board approve the recommended option contained in the Final Staff Report for the South Central St. Catharines Accommodation Review, attached as Appendix A; specifically,***

***That Glen Ridge Public School be closed for instructional purposes as of June 30, 2016, and that students be redirected to Oakridge Public School; and,***

***That the boundary for Oakridge Public School be modified as shown in Appendix B and be effective as of June 30, 2016.***

Appended Data:

APPENDIX A: Final Staff Report for the South Central St. Catharines Accommodation Review

APPENDIX B: Oakridge Public School Boundary

Respectfully submitted on February 19, 2016,

Lora Courtois  
Superintendent of Planning

Warren Hoshizaki  
Director of Education

# APPENDIX A



# **District School Board of Niagara**

**2015-2016**

## **South Central St. Catharines Modified Accommodation Review**

### **Final Staff Report**

**DISTRICT SCHOOL BOARD OF NIAGARA  
REPORT TO THE BOARD OF TRUSTEES  
MEETING OF JANUARY 12, 2016**

---

**SOUTH CENTRAL ST. CATHARINES MODIFIED ACCOMMODATION REVIEW  
FINAL STAFF REPORT**

**PURPOSE**

On October 13, 2015, after receiving and carefully considering the South Central St. Catharines Initial Staff Report and School Information Profile Reports, the Board of Trustees approved the initiation of the South Central St. Catharines Modified Accommodation Review involving Glen Ridge PS and Oakridge PS.

The purpose of this Final Staff Report is to provide Trustees with a summary of the South Central St. Catharines Modified Accommodation Review, information on the community consultation process, and a final staff recommended option. The Accommodation Review process is still underway, with opportunities for public delegations at the January 26, 2016 Board meeting. Any changes to the Final Staff Report, as a result of public delegations, will be detailed in an addendum. The Final Staff Report, including a public delegation addendum, will be presented on February 23, 2016 for Trustees' consideration.

**SOUTH CENTRAL ST. CATHARINES MODIFIED ACCOMMODATION REVIEW**

The District School Board of Niagara's (DSBN) Long Term Accommodation Plan (LTAP), 2015-2024, details the current and future state of the Board's elementary and secondary schools. The LTAP helps identify planning areas and schools that face challenges due to enrolment or facility utilization, and where opportunities exist to create structures that support kindergarten to grade 8 (K – 8) or single track French Immersion programs.

Glen Ridge PS was identified as a school with both low enrolment and facility utilization rate, now and into the future. Glen Ridge PS is currently a K – 4 school and students advance to nearby Oakridge PS for grade 5 – 8. An opportunity exists to address the accommodation issues at Glen Ridge PS and to create a single K – 8 school structure for students.

The South Central St. Catharines Modified Accommodation Review is being undertaken in accordance with the DSBN Accommodation Review Policy (F-2). A modified process does not require the establishment of an Accommodation Review Committee. The South Central St. Catharines Accommodation Review meets the following criteria set out in Policy F-2 for a modified process:

<b>CRITERIA</b>	<b>ACTUAL</b>
An elementary school with an enrolment of less than 150 students for the current year and which is projected to remain below 150 for the next two years.	Enrolment at Glen Ridge PS for September, 2015, was 57 students and is projected to be 61 students for 2016/2017 and 64 students for 2017/2018.
A school with a utilization rate of 65% or lower.	Facility utilization at Glen Ridge PS is 35%.
Distance to nearest available accommodation is 10 kilometres or less from the school(s) under review.	The distance between Glen Ridge PS and Oakridge PS is 1.7 kilometres.
The relocation of a program or grades where the enrolment constitutes 50% or more of the school's enrolment.	The consolidation of Glen Ridge PS into Oakridge PS would represent the relocation of 100% of student enrolment in all grades.

The notice of Trustees' decision to initiate the South Central St. Catharines Modified Accommodation Review was posted on the DSBN Accommodation Review website, [www.dsbn.org/arc](http://www.dsbn.org/arc) and published in the local newspapers. It was also distributed to the affected school principals and communities, City of St. Catharines, Niagara Region, community partners, Directors of Education of coterminous boards, and the Ministry of Education. The Notice of Initiation provided information on the public meeting, how to participate in the process, and how to obtain more information.

## **COMMUNITY CONSULTATION**

Consultation with school communities, municipal and community partners, and the general public is key to the Accommodation Review process. Preliminary consultation with municipalities and community partners was done prior to the initiation of the Accommodation Review and was ongoing throughout the process. Immediately following the Trustees' decision to initiate the Accommodation Review, a webpage was available on the Board and school websites for public input.

A public meeting was held on December 2, 2015, at Glen Ridge PS to provide interested parties with an opportunity to hear about the Accommodation Review and to provide their input by way of speaking or submitting written comments. The public was reminded to utilize the DSBN and school Accommodation Review websites to access the relevant information. The website contains the process, important dates, reports and other related documents as well as the opportunity to submit further comments, input, and questions.

Principals of Glen Ridge PS and Oakridge PS kept their school communities informed through newsletters, school council meetings, and by encouraging parents to contact them with any questions or concerns regarding the Accommodation Review.

A summary of the consultation process follows:

### ***City of St. Catharines***

DSBN staff met with City of St. Catharines representatives from Planning & Building Services on two occasions prior to the initiation of the Accommodation Review. The meetings included a discussion of the DSBN's Long Term Accommodation Plan, the Ministry's Pupil Accommodation Review Guidelines, potential accommodation reviews, growth patterns in St. Catharines, and community partnership opportunities. The City provided the DSBN with updated community growth information.

After the initiation of the Accommodation Review, DSBN staff met with City of St. Catharines' Chief Administrative Officer, and staff from Planning & Building Services, Economic Development, Parks, Recreation and Culture, Legal Services, and Financial Services to present and discuss the recommended option in the Initial Staff Report. The meeting included a discussion regarding the recommended option, the accommodation review process, future opportunities for partnerships, and the St. Catharines Heritage Advisory Committee's direction to explore a heritage designation for Glen Ridge PS and the property. Additionally, the City of St. Catharines was invited to submit written comments.

As of the date of this report, no written comments have been received from the City of St. Catharines<sup>1</sup>.

---

<sup>1</sup> Report prepared: January 4, 2016

## ***Niagara Region***

DSBN staff met with Niagara Region staff prior to the initiation of the Accommodation Review. The meeting included a discussion of the DSBN's Long Term Accommodation Plan, the Ministry's Pupil Accommodation Review Guidelines, potential accommodation reviews, growth patterns in Niagara, and community hub possibilities. The Niagara Region provided the DSBN with updated Regional policy information.

After the initiation of the Accommodation Review, DSBN staff had a teleconference with Niagara Region staff to discuss the recommended option in the Initial Staff Report and the Accommodation Review process. The meeting included the rationale behind Oakridge PS being recommended as the preferred site for consolidation. The Niagara Region acknowledged the Glenridge community's concerns regarding the future use of the Glen Ridge PS site should the school be closed.

The Niagara Region expressed an interest in future opportunities for partnerships, in particular for Regional services that may support the community hub concept. The Niagara Region had an interest in the process for disposal of surplus school properties and how it could fit into their planning process. In addition, the Niagara Region was invited to submit written comments.

As of the date of this report, no written comments have been received from the Niagara Region<sup>2</sup>.

## ***Community Partners/Community Use of School Permit Holders***

Before and after school child care is offered by the YMCA of Niagara at both schools and is the only community partner in this review. Oakridge PS had 6 community use permits in the last year and Glen Ridge PS had 3 permits. Community partners and community use of school permit holders were sent invitations to provide their input prior to, and after, the initiation of the Accommodation Review.

As of the date of this report, no written comments have been received<sup>3</sup>. One Community Use of School Permit Holder from Glen Ridge PS spoke at the public meeting. DSBN staff has received verbal confirmation from the YMCA of Niagara that they will continue to provide before and after school child care at Oakridge PS should the consolidation be approved.

In accordance with the Schools-First Child Care Capital Retrofit Policy, DSBN staff will continue discussions with the Niagara Region and local child care providers to ensure there is an opportunity for full-day child care, should the need arise in the future.

## ***Public Meeting/Website Submissions***

The public meeting had over 200 attendees. The meeting was organized so those interested in the education of students and those with an interest in the property could both provide input. A total of 18 speakers provided input. Six speakers had children that currently attend Glen Ridge PS. Over 50 written submissions have been received as of the date of this report<sup>4</sup>. On December 9, 2015, answers to key questions or comments received were posted on the Board's Accommodation Review webpage.

---

<sup>2</sup> Report prepared: January 4, 2016

<sup>3</sup> Report prepared: January 4, 2016

<sup>4</sup> Report prepared: January 4, 2016



### ***Future Use of Property***

The majority of the comments received from the community raised the importance of Glen Ridge Public School's heritage value, the preservation of the school's greenspace or park, and the future use of the property should the school close. All of these are matters that would be addressed outside the accommodation review process.

The development of a community hub, should the school close, was also raised. The community hub concept is a Ministry of Education and Ministry of Municipal Affairs and Housing initiative. A community hub can be a school, a neighbourhood centre or another public space that offers coordinated services such as education, health care, and social services. The Ministries encourage the municipal and education sectors across the province to plan together for the creation of community hubs where appropriate. The DSBN has had discussions with the City of St. Catharines and the Niagara Region in this regard, and will continue into the future.

Should Trustees make the decision to close Glen Ridge PS for instructional purposes, the Board would have two options: repurpose the building or declare it surplus. Should the property be declared surplus, the Board would conduct the sale according to Regulation 444/98. Under the provisions of the regulation, "preferred agencies," such as the City of St. Catharines and the Niagara Region would be among the first to have the opportunity to purchase the property at fair market value.

In an effort to explore the benefits of a heritage designation to Glen Ridge PS, DSBN staff met with the members of the St. Catharines Heritage Advisory Committee on November 30, 2015 to discuss issues surrounding a potential heritage designation of the school and property. The DSBN is committed to being involved in the process.

### ***Community School***

The public comments received highlighted the importance and tradition of a community school in the Glenridge neighbourhood. The DSBN recognizes that Glen Ridge PS is important to parents of students, many former students, and residents of the neighbourhood.

### ***Suggestions***

A number of alternative options were also suggested by the community as potential solutions to keep Glen Ridge PS open, including the introduction of French Immersion, boundary changes, and community partnerships such as child care centres. These are all addressed below in the Accommodation Actions Taken and Considered section of this report.

### ***Enrolment Projections***

The accuracy and methods of the DSBN's enrolment projections were raised by community members. The DSBN uses a well-developed and recognized enrolment projection method which has produced reliable projections. This method is applied consistently throughout all 12 municipalities in Niagara and is also used by many other school boards in Ontario.

Projections are based on a number of different factors such as live births, school enrolment and grade-to-grade retention rates. This method captures many of the transitions that are occurring in the local school environment, such as migration of families, new residential growth and student transfers to and from the school system.

In addition, local data, such as proposed new developments and permit activity, was obtained from the City of St. Catharines. This data was reviewed and analyzed as part of the development of enrolment projections. In the case of the Glen Ridge PS area, the City's information indicates that there are currently no large vacant developable lands in the area or active plans of subdivisions that would generate significant new housing developments.

### **Transportation**

Transportation from Glen Ridge PS to Oakridge PS was raised and related to bus ride times, walking as a healthy option, and safety issues. This is addressed below in the Transportation section of this report.

### **ACCOMMODATION ACTIONS TAKEN AND CONSIDERED**

The DSNB has other options that do not include an accommodation review to address accommodation issues at schools. For instance, enrolment or facility utilization issues may be addressed through boundary adjustments, community partnerships, program changes (e.g. French Immersion), grade relocation, or facility improvements. Many of these options have been considered or completed in the past.

In the case of Glen Ridge PS and Oakridge PS the following actions have been taken:

1999	Full-day child care centre was located at Oakridge PS (until 2012)
2008	YMCA provided a full-day child care centre at Glen Ridge PS (until 2014)
2011/12	Introduction of grade 5 French Immersion at Oakridge PS
	Full-day child care was discontinued at Oakridge PS. In its place, the YMCA established a before and after school child care centre, and continues to provide before and after school child care at Oakridge PS
2012/13	Oakridge PS offered grade 6 – 8 French Immersion and K – 8 English programs
2013	The Tremont area boundary change relocated students from Burleigh Hill PS to Oakridge PS in response to a realignment for secondary school boundaries
2013/14	Oakridge PS K – 5 English program was relocated to Briardale PS. Oakridge PS became both a grade 6 – 8 French Immersion and a grade 6 – 8 English program school. These accommodation changes were undertaken in an attempt to balance enrolment and avoid triple grade splits in English programming at both Oakridge PS and Briardale PS
2014/15	Oakridge PS became a K – 8 English program school through the consolidation of Briardale PS K – 5. French Immersion grade 6 – 7 was relocated to the newly opened Jeanne Sauvé PS. Grade 8 French Immersion was grandfathered at Oakridge PS for the 2014/15 school year
	Full-day kindergarten was expanded to Oakridge PS and Glen Ridge PS
2015	The boundary area shared between Oakridge PS and Connaught PS for grade 7 and 8 was transferred to the Oakridge PS catchment area
2015/16	Oakridge PS became a K – 8 English program school
	Glen Ridge PS was transitioned from a K – 6 school to a K – 4 school temporarily to avoid a triple grade split class consisting of 23 grade 4, 5, and 6 students. Students attending Glen Ridge PS would normally transition to Oakridge PS to complete grade 7 and 8

The South Central St. Catharines Accommodation Review has been undertaken to address low enrolment and low facility utilization at Glen Ridge PS, and to take advantage of the educational benefits of a K - 8 school structure for Glen Ridge PS students. Throughout the Accommodation Review, many scenarios were considered including the expansion of Glen Ridge PS to a K – 8 school, boundary changes, alternative consolidation options, programming changes, and community partnerships.

Current and projected enrolment would not be sufficient to support Glen Ridge PS as a K – 8 school within its boundary area.

Altering boundaries of any of the neighbouring elementary schools would not reduce the number of overall surplus spaces at the DSBN. The DSBN's LTAP indicates there are no surrounding elementary schools that are over capacity now or projected into the future. Drawing students from the surrounding elementary schools would exacerbate enrolment and utilization issues they are currently experiencing, particularly at Burleigh Hill PS, Connaught PS and Edith Cavell PS. Transferring sections of a neighbouring elementary school, such as Harriet Tubman PS, creates a misalignment of elementary and secondary school boundaries, which would result in the grade 8 classes at Oakridge PS being split between St. Catharines Collegiate SS and Sir Winston Churchill SS for high school. The DSBN attempts to minimize splitting grade 8 classes as they advance to secondary schools.

The Glen Ridge PS boundary area is currently defined by prominent geographical features or perceived barriers: Twelve Mile Creek to the west, Burgoyne Woods/Hwy 406 to the east and the old Welland Canal/Hwy 406 to the north. Transferring neighbouring boundary areas to Glen Ridge PS would result in other students having to travel across these perceived barriers, leaving their neighbourhoods, which may be seen as more connected to their current schools.

DSBN staff considered other options, including consolidating Oakridge PS students into Glen Ridge PS. Glen Ridge PS does not have the capacity to accommodate the combined student population. Additionally, consolidating both Oakridge PS and Glen Ridge PS students into the Briardale PS site was considered. At the time when the south end St. Catharines French Immersion program was relocated to Jeanne Sauvé, the parent community of Briardale PS and Oakridge PS requested a solution for the resulting low enrolment of students taking English programming at both of those schools. It was determined that Oakridge PS was the preferred site because it was better suited for intermediate students, and the majority of students lived in the Oakridge PS boundary.

The DSBN has two consolidated French Immersion sites in St. Catharines. Dalewood PS serves 12 elementary schools in the north end of St. Catharines and northern Niagara-on-the-Lake. Jeanne Sauvé PS serves 15 elementary schools in the south end of St. Catharines and Thorold. The Program and Planning Committee, in May 2013, approved the consolidation of Briardale PS, Oakridge PS and Alexandra PS French Immersion programs into Jeanne Sauvé PS. Neither Oakridge PS nor Briardale PS had sufficient capacity to host this amalgamated French Immersion grade 1 – 8 program. This consolidation eliminated transitions for students and allowed for enhanced educational and extra-curricular programming.

When considering the addition of French Immersion programming at Glen Ridge PS, it is important to note that as of September 28, 2015, the Glen Ridge PS boundary had 41 students attending Jeanne Sauvé PS ranging from grades 1 through 8. This number of students and range of grades does not make French Immersion at Glen Ridge PS a viable option. Furthermore, establishing a French Immersion program at Glen Ridge PS would not alleviate the issues surrounding low enrolment in the English track.

Where sufficient enrolment exists for optimal student programming, community partnerships, such as child care facilities, can serve to help supplement the costs of underutilized space within schools. For Glen Ridge PS, additional community partnerships would not address issues related to low enrolment, triple split grades, and the subsequent programming impacts.

The DSBN previously met with the Director of Children's Services from the Niagara Region, the coterminous board, and local child care providers to determine the interest and viability of moving forward in transitioning child care centres into schools, as per the Schools-First Child Care Capital Retrofit Policy. Through this consultative process, 14 DSBN schools met the criteria and expanded their child care services to include infant and toddler pre-school programs. The YMCA of Niagara, which is the licensed child care provider at Glen Ridge PS, and the Niagara Region, concluded that the Glen Ridge PS site was not a viable option as it did not meet their geographic needs and there were not enough children to open or expand existing child care centres. In addition, expanding at the Glen Ridge PS site would have negatively impacted already existing neighbouring child care centres, which was in contravention of the policy. No other child care centres have expressed an interest in expanding to the Glen Ridge PS site.

Some elementary school partnerships are established by the Ministry of Education. For example, the Ministry of Education supports Parent Family and Literacy Centres (PFLC) throughout Ontario. The location of these centres are determined by the Ministry and are based on student and community need. The Ministry has not identified Glen Ridge PS as a PFLC site within the DSBN.

## **RECOMMENDED OPTION**

*The recommended accommodation option is to close Glen Ridge Public School for instructional purposes as of June 30, 2016, and redirect students to Oakridge Public School. The school catchment area boundaries would be modified accordingly.*

## **Rationale**

The DSBN believes it is in the best interest of students to maintain school populations that support a diverse learning environment and provide a range of opportunities in programming, extracurricular activities, and services. At the same time, the Board must address the impacts and costs of declining enrolment, excess space at schools, and aging facilities. Consolidating the students into one school is the best option for both school communities and allows the Board to maximize resources.

In arriving at its recommendation, DSBN staff have determined that the two school populations can be consolidated and accommodated in Oakridge PS where capacity exists and is projected into the future. This option would benefit students with enhanced programming and academic continuity. It would also address low enrolment and facility utilization. From a cost perspective, reducing underutilized spaces allows funds that would normally be associated with maintaining partially filled buildings to be used for additional staff and resources.

## *Programming*

The consolidation of Glen Ridge PS into Oakridge PS brings together communities, teachers, and resources into a single school, which will provide the benefits of a larger school population. Schools with very small student populations often have combined classes, triple or even quadruple split grades. Currently, the 57 students at Glen Ridge PS are all organized into combined classes of JK/SK, grade 1-2, and grade 3-4. For example, the combined grade 3-4 class includes seven grade 3 students, and six grade 4 students<sup>5</sup>. Schools with a larger population have multiple classes of the same grade providing both teachers and students with the opportunity for a more diverse learning environment. For students, this allows access to a variety of teachers and programs as well as flexibility in placements to support their learning needs. For teachers, it allows for professional collaboration when working together to enhance their teaching practice.

---

<sup>5</sup> September 28, 2015 data

Currently, the Glen Ridge PS staff consists of three teachers and a Principal. The Principal's time is split between the duties of a Principal, Learning Resource Teacher, and Teacher-Librarian. A larger school population would provide for additional staff including a full time Principal, a dedicated Learning Resource Teacher, and a Teacher-Librarian.

A larger school population also provides students with more opportunities outside the context of the regular class structure through extracurricular sports, clubs, and after school programs. In addition, shared resources serve to enhance student learning.

### *K – 8 Elementary School Organization*

The DSNB supports the K – 8 structure and has been successfully consolidating school communities to provide a K – 8 elementary education for students in one school. Recent examples include: the consolidation of the former Meadowvale PS (JK – 6) and Sheridan Park PS (K – 8) into the new William Hamilton Merritt PS, the former Queen Mary PS (7 – 8), Maywood PS (K – 6), Memorial PS (K – 6), and Alexandra PS (K – 6) into the new Harriet Tubman PS, and the bringing together of Ridgeway PS (K – 3) and Bertie PS (4 – 8) along with Crystal Beach PS (K – 8) into the new John Brant PS which is scheduled to open in September 2016. All of these successful consolidations to the K – 8 structure minimized disruption to students by eliminating the transition from one school to another and kept siblings together in one school.

### *Enrolment & Facility Utilization*

Glen Ridge PS has an enrolment of 57 students<sup>6</sup> and a facility utilization rate of 35%. Over the next 10 years, enrolment is projected to reach a peak of 67 students and facility utilization to increase to approximately 40%.

Oakridge PS has an enrolment of 203 students<sup>7</sup> and a facility utilization rate of 73%. Over the next 10 years, both the enrolment and facility utilization rate is projected to decline.

The consolidation would result in an on-the-ground (OTG) capacity of 305 and a projected enrolment of 255 students at Oakridge PS. The facility utilization rate would be 84%. Projections indicate a peak consolidated enrolment of 267 students within the next 10 years, which is within the consolidated school's capacity. The consolidation would reduce surplus pupil spaces by 135.

A map of the new boundary and the consolidated enrolment projections can be found in Appendix A and B.

### *Transportation*

The transportation eligibility policy would be applied to one school location for all students in the new boundary. This will result in 138 students being eligible for bussing with an average bus ride time of 10 minutes. There will be an increased cost associated with the recommended consolidation of \$18,000 annually.

Consolidating the Glen Ridge PS school population into Oakridge PS will change the current transportation situation for Glen Ridge PS students. A hazard review was completed by Niagara Student Transportation Services (NSTS) for the Glenridge rail bridge and it was deemed a hazard for grade 1 to 3

---

<sup>6</sup> September 28, 2015 data

<sup>7</sup> September 28, 2015 data

students. Students who live under the eligibility distance would qualify for transportation as a result of this hazard designation. NSTS does not differentiate by grade levels in hazard policy application because it is understood that older students and siblings support getting younger children to and from the bus stops. As a result, all students from the current Glen Ridge PS boundary would be eligible for bus transportation to Oakridge PS.

Within the proposed catchment area Oakridge PS is centrally located. Appendix C shows the student distribution within the catchment area.

### *Facilities & Funding*

Capital investment in Oakridge PS is required for an additional kindergarten room, potential child care addition, and renovations to address accessibility. In addition, the current Marsdale Drive school entry and office will be relocated to Oakridge Drive and the parking lot at Oakridge Drive will be expanded. The estimated cost is \$3.5 to \$4.5 million with the majority of this cost attributed to the required renewal and accessibility needs of Oakridge PS. This project is eligible under the requirements for school renewal funding or proceeds of disposition that is applied to all DSBN schools.

The total estimated net savings to the Board in staffing, utility, property and maintenance costs including transportation is approximately \$171,500 annually. Based on the Multi-Year Facility Renewal Needs Assessment Summary, the total 5 year estimated facility renewal costs avoided due to school closure is approximately \$1.86 million.

A financial summary of the consolidation scenario is provided in Appendix D.

### **PROPOSED ACCOMMODATION PLAN**

The recommended option, should it be approved, could be completed as follows:

**March 2016 – September 2016:** A Transition Team consisting of the Area Superintendent, Principals, parents and staff representatives of Oakridge PS and Glen Ridge PS would be established to identify issues, needs, and responsibilities related to the implementation of the school closure.

**July 2016:** Construction expected to begin at the Oakridge PS site.

**September 2016:** Students from Glen Ridge PS would join Oakridge PS students at the Oakridge PS site.

### **TIMELINES**

Public delegations will be received at the January 26, 2016, Board Meeting. Following the delegations, a summary of the public delegations will be prepared as an addendum to the Final Staff Report. The Final Staff Report and addendum will be brought forward to Trustees for consideration at the February 23, 2016, Board Meeting.

## RECOMMENDATION

***That the Board receives the South Central St. Catharines Modified Accommodation Review Final Staff Report.***

Appended Data:

- APPENDIX A: Consolidated Scenario Boundary Map
- APPENDIX B: Consolidated Scenario Enrolment Projections
- APPENDIX C: Current Student Distribution Map
- APPENDIX D: Consolidated Scenario Financial Summary

Respectfully submitted on January 8, 2016,

Lora Courtois  
Superintendent of Planning

Warren Hoshizaki  
Director of Education

**Final Staff Report**  
**South Central St. Catharines Accommodation Review**

**APPENDICES INDEX**

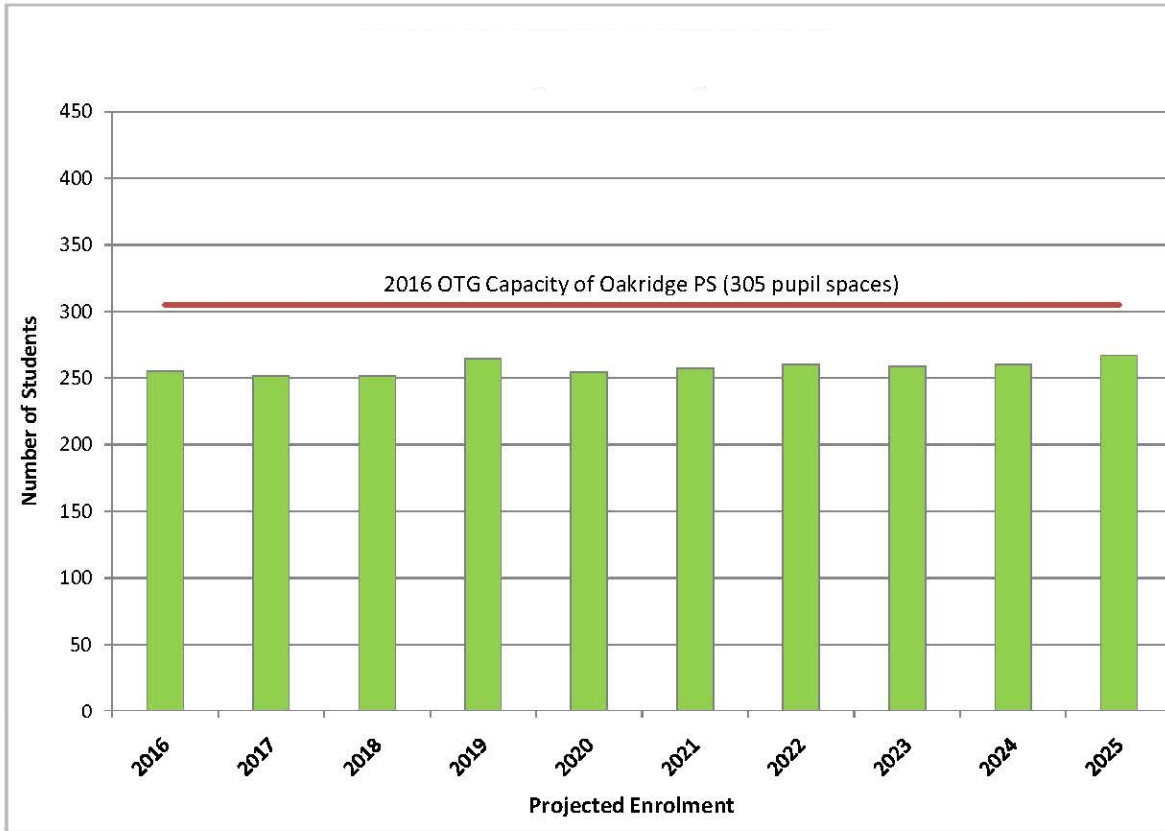
<b>Title</b>	<b>Appendix</b>
Consolidated Scenario Boundary Map	Appendix A
Consolidated Scenario Enrolment Projections	Appendix B
Current Student Distribution Map	Appendix C
Consolidated Scenario Financial Summary	Appendix D



### Consolidated Scenario Boundary Map



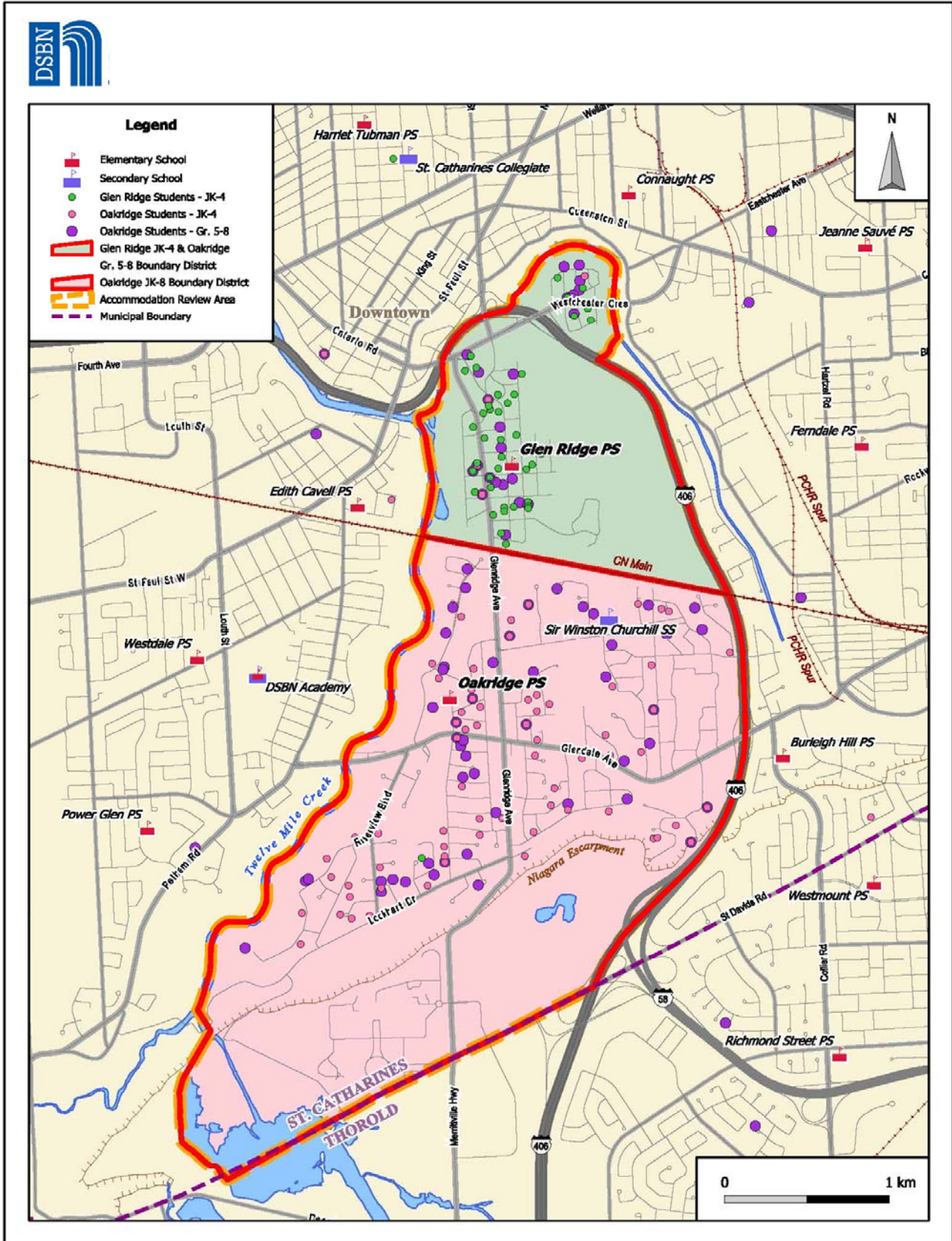
**Consolidated Scenario  
Enrolment Projections**



Year	JK	SK	1	2	3	4	5	6	7	8	Total
2016	34	26	24	27	23	22	33	12	23	31	255
2017	34	34	19	24	27	23	21	33	12	25	251
2018	34	34	25	19	24	26	22	21	33	13	251
2019	34	34	25	25	19	24	26	22	21	36	265
2020	34	34	25	25	25	19	23	26	22	23	254
2021	34	34	25	25	25	24	18	23	26	24	257
2022	35	34	25	25	25	24	24	18	23	27	260
2023	35	35	25	25	25	24	24	24	18	25	259
2024	35	35	26	25	25	24	24	24	24	19	260
2025	35	35	26	25	25	24	24	24	24	25	267

Sc. 196

Current Student  
Distribution Map



Note: Student locations based on September 28, 2015 Trillium Data.  
Map prepared by: DSBN Planning Services. Contains map data courtesy of: © 2015 Regional Municipality of Niagara and its suppliers, © 2010 Queen's Printer (Ontario Ministry of Natural Resources)

**Consolidated Scenario  
Financial Summary**

<b>ESTIMATED CAPITAL COST OF CONSTRUCTION</b>	<b>Capital (One Time) \$</b>
Capital addition and site requirements:	
<ul style="list-style-type: none"> <li>Kindergarten addition, new front entrance, accessibility requirements, parking</li> </ul>	<u>3,500,000 - 4,500,000</u>

<b>ESTIMATED ANNUAL OPERATING SAVINGS</b>	<b>Annual \$</b>
<u>Savings</u>	
Principals / Teaching Assignments	90,500
Secretaries	48,000
Caretaking	74,000
Utility, Property and Maintenance	<u>59,000</u>
	271,500
<u>Costs</u>	
Transportation	18,000
Loss of School Foundation Funding	<u>82,000</u>
Net Annual Operating Savings	<u>171,500</u>

<b>ESTIMATED SCHOOL RENEWAL</b>	<b>Capital (One Time) \$</b>	<b>Annual</b>
5 Year School Renewal Expenditures Avoided	<u>1,865,042</u>	

# APPENDIX B

### Consolidated Scenario Boundary Map



# March 2016

## Trustee Calendar

Feb 2016							Apr 2016						
S	M	T	W	T	F	S	S	M	T	W	T	F	S
1	2	3	4	5	6							1	2
7	8	9	10	11	12	13	3	4	5	6	7	8	9
14	15	16	17	18	19	20	10	11	12	13	14	15	16
21	22	23	24	25	26	27	17	18	19	20	21	22	23
28	29						24	25	26	27	28	29	30

Sunday	Monday	Tuesday	Wednesday	Thursday	Friday	Saturday
Feb 28	29	Mar 1 1:00 PM SAL	2	3	4	5
6	7 5:30 PM Policy Committee Meeting 6:15 PM Board meeting	8 6:00 PM Community Partnerships and Planning Meeting	9 6:00 PM SEAC	10	11	12
13	14 9:00 AM March Break	15 12:00 AM March Break	16 12:00 AM March Break	17 12:00 AM March Break	18 12:00 AM March Break	19
20	21 6:00 PM Program and Planning	22	23	24 8:30 AM Strategic Plan Working Committee Meeting	25 9:00 AM Good Friday	26
27 9:00 AM Easter Monday	28	29	30	31	Apr 1	2