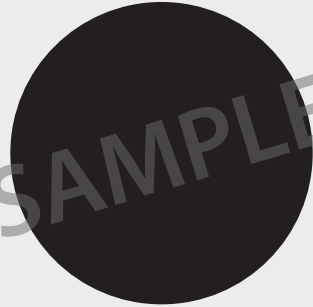


CALIBRATION TIPS

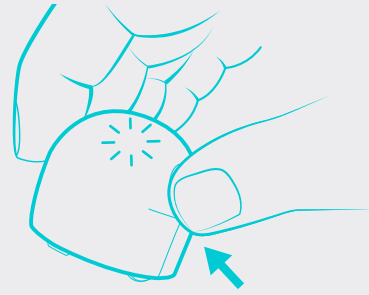
It is important to calibrate Ozobot before each session and/or when you change play surfaces. Calibration helps improve Ozobot's code and line reading accuracy.

PAPER CALIBRATION

- 1 Use a black dot slightly bigger than Ozobot to calibrate. If you are using markers, create a similar sized calibration dot using a black marker.

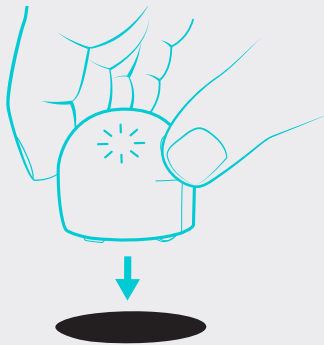


2



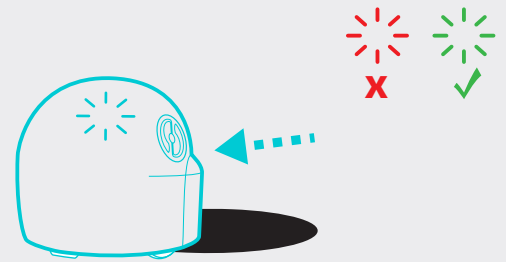
Hold down the power button on Ozobot for 2 seconds until the top LED light flashes white.

3



Quickly place Ozobot in the middle of the black calibration dot and let go.

4



If calibration is successful, Ozobot will move and then blink green. Start over if Ozobot blinks red.

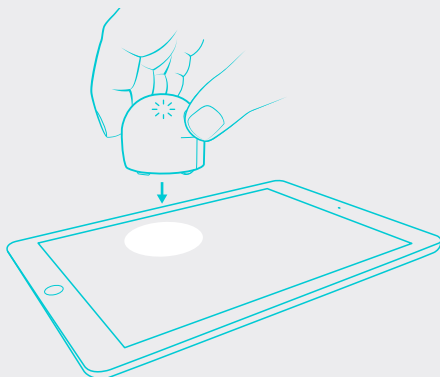
DIGITAL CALIBRATION



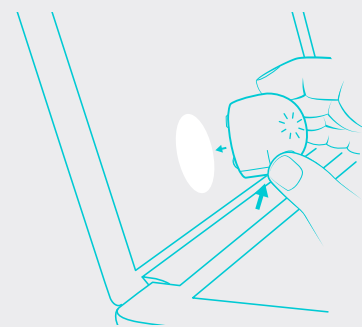
Set your screen brightness to 100% and make sure the auto-brightness feature is turned off on your tablet or computer screens.



Hold down the power button on Ozobot for 2 seconds. The Ozobot will flash a white light when ready.



Place Ozobot against a white section of the screen (i.e. the flash loading spot in OzoBlockly) and release the button. Ozobot will begin flashing white.



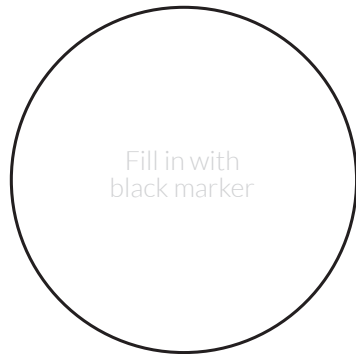
When Ozobot blinks green, it means that it has successfully calibrated. Start over if Ozobot blinks red.

These calibration dots can be re-used for play on paper with Ozobot. **Cut along the dotted lines and fill circles in with black marker.** You may keep these for calibration in later sessions.
Note: Do not laminate as Ozobot cannot properly calibrate on a laminated surface.

OZOBOT CALIBRATION DOT

Calibrate when:

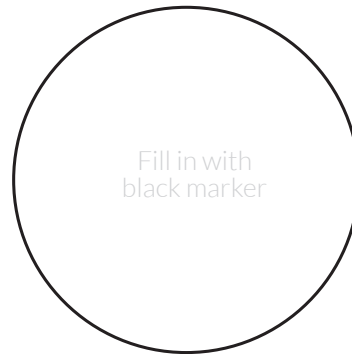
- You begin playing with Ozobot
- You change play surfaces
- Lighting conditions change drastically



OZOBOT CALIBRATION DOT

Calibrate when:

- You begin playing with Ozobot
- You change play surfaces
- Lighting conditions change drastically



OZOBOT CALIBRATION DOT

Calibrate when:

- You begin playing with Ozobot
- You change play surfaces
- Lighting conditions change drastically

